



## WHAT IS THE youthPROFILER?

youthPROFILER is a digital assessment tool that teachers and parents can use to highlight learning gaps and most importantly know how to close these gaps. The web-based platform is available via smartphones, tablets, or computers. Unlike others we can deploy and train unemployed youth to support teachers in administering the tests and provide focused interventions to close the learning gaps.

## SCREENING FOR SUPPORT EDUCATION SERVICES QUESTIONS FREQUENTLY ASKED

### WHAT DOES THE LEARNER PROFILER MEASURE?

- The assessment measures prior academic experience in the form of literacy and numeracy tests.
- The Profiler also collects demographic and social data in order to contextualise the results

### DO YOU NEED TO BE A REGISTERED PROFESSIONAL IN ORDER TO USE THE LEARNER PROFILER?

- The LP is an educational assessment system and is not a psychological or occupational skills assessment and therefore no Health Professions Council of South Africa (HPCSA) registration is required;
- The LP does not assess for personality or intelligence quotient (IQ) and can therefore be used by anyone interested in education matters;
- The LP can be used by professional persons as well as provincial, district and school-based staff.

## WHAT INFORMATION CAN I HARVEST FROM LEARNERS IN MY INSTITUTION?



SCREEN FOR  
ACADEMIC  
ABILITY



IDENTIFY  
LITERACY  
LEVELS AND  
SUPPORT  
REQUIRED



SCREEN FOR  
LEARNER  
ABILITIES  
AND HIDDEN



COLLECT  
LEARNER  
SOCIAL  
CONTEXT AND  
SUPPORT



TRACK  
LEARNER  
PROGRESS  
AND PLAN  
SUPPORT  
PROGRAMMES

## WHAT MAKES PROFILER SO UNIQUE?



IT CREATES LOCAL NORMS (BENCHMARKS) IN REAL-TIME;



IT CREATES NATIONAL, PROVINCIAL, DISTRICT, CLASS, GRADE AND INDIVIDUAL PERFORMANCE BENCHMARKS FOR EVERY TEST;



IT UPDATES NORMS EVERY TIME ONE OR THOUSANDS OF TESTS ARE COMPLETED - ON A MINUTE BY MINUTE BASIS;



IT PROVIDES DEEP INFORMATION (DATA) ON EVERY LEARNERS LITERACY AND NUMERACY PERFORMANCE SUPPORTED BY SOCIAL AND DEMOGRAPHIC DATA IN EVERY REPORT

## CONTACT US



GERALD@SHAPINGTHELEARNER.COM



ERICA@SAYOUTHATWORK.COM



ANGELLINA@SAYOUTHATWORK.COM



011-682 1716



105 OXFORD ROAD, SAXONWOLD, GAUTENG



WWW.LINKEDIN.COM/COMPANY/YOUTH-WORK



WWW.FACEBOOK.COM/YOUTHSEWINGINITIATIVE

GIVE EDUCATORS THE TOOLS TO HELP THEM SUPPORT THE LEARNER

In a multi-layered and culturally complex society here in South Africa (and Africa), assessing for literacy and numeracy competency and providing social context information is more useful to educators who want to support a learner. Such results is undeniably more reliable for learner support needs than using test matrices that are often based on contentious and questionably normed “intelligence” assessments.

Gerald Williamson – Educationist and Clinical Psychologist

TELL ME MORE ABOUT THE LEARNER PROFILER?

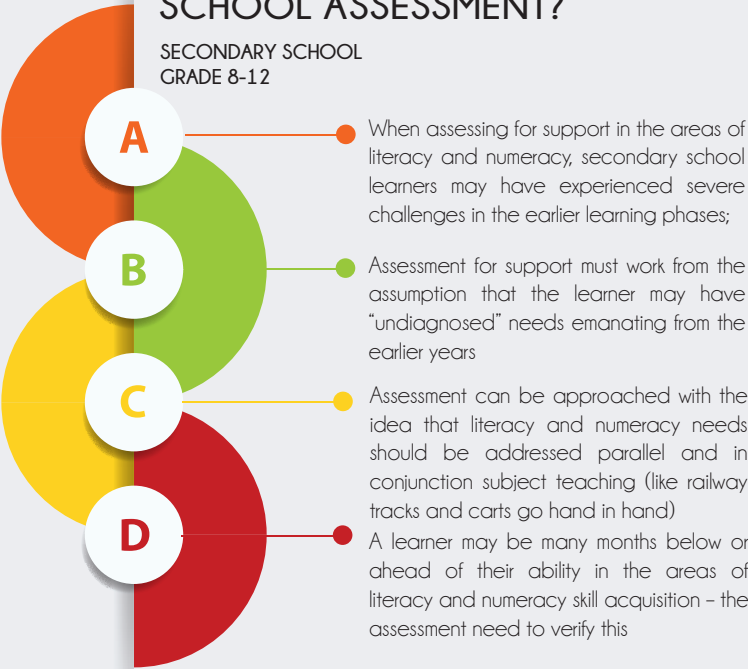
White Paper 6?  
SIAS 2014 Policy?

THE LP: ASSESSING THE RAILWAY TRACKS OF LEARNING



LET’S TALK ABOUT SECONDARY SCHOOL ASSESSMENT?

SECONDARY SCHOOL  
GRADE 8-12



TEST EVERYONE NOT ONLY THE “WEAKER” LEARNER – VARIABLE TESTING WILL ALSO STRENGTHEN YOUR BENCHMARKS (NORM COMPARISONS)

CAN THE PROFILER ASSESS ADULTS?

YES, ABSOLUTELY



We have no way to know what a 12 or 40 year old should be spelling like here in Africa or South Africa!



HOW LONG DOES AN ASSESSMENT WITH THE LEARNER PROFILER TAKE?

1-4  
HOURS PER  
ANNUM  
(INCLUDES  
REPEAT/  
PROGRESS

Some children and teens depending on their age would need more or less time when doing an assessment. When assessing for support, you are trying to find out what the student needs for support, what they know and what they do not know



WHAT ABOUT LOLT (LANGUAGE OF LEARNING AND TEACHING) ASSESSMENT?

AFRIKAANS  
ZULU  
SOTHO  
XHOSA

The Profiler is also geared to assess in mother-tongue languages such as Afrikaans, Zulu, Sotho and Xhosa with more languages being completed in the near future.